

NOTE: DO NOT DISCARD the Parts List from the Instruction Bulletin. Place the Parts List in the appropriate place in the machine manual for future reference. Retaining the Parts List will make it easier to reorder individual parts and will save the cost of ordering an entire kit.

NOTE: Numbers in parenthesis () are reference numbers for parts listed in Bill of Materials.

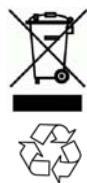
Installation instructions for **kit number 9020231**

SYNOPSIS:

This kit contains the parts needed to replace the brake rod on T17 scrubbers.
Please follow step-by-step instructions.

SPECIAL TOOLS / CONSIDERATIONS: NONE

(Estimated time to complete: 1 hour)



PROTECT THE ENVIRONMENT

Please dispose of packaging materials, used machine components such as batteries and fluids in an environmentally safe way according to local waste disposal regulations.

Always remember to recycle.

PREPARATION:

1. Completely empty the solution tank and recovery tank. Refer to Operator manual for instructions how to empty tanks.

FOR SAFETY: Before leaving or servicing machine, stop on level surface, turn off machine, set parking brake, and remove key.

2. Chock the front tire.
3. Chock the rear wheel on the side of the machine opposite of where the brake rod is being replaced.
4. Jack up the back side of the machine high enough to remove the rear wheel from the machine. Position a jack stand under the frame of the machine and lower the machine onto the jack stand. (Fig. 1)

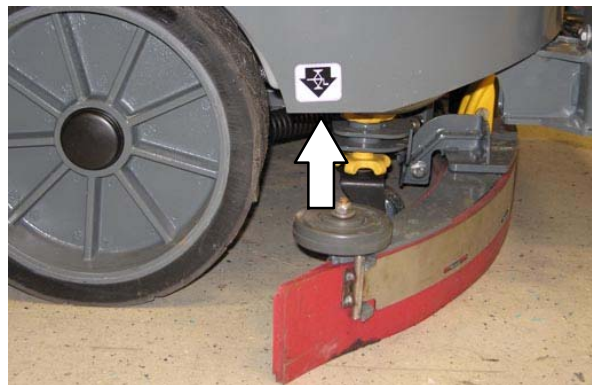


FIG. 1

FOR SAFETY: When servicing machine: block machine tires before jacking machine up, jack machine up at designated locations only. (support machine with jack stands), use hoist or jack that will support the weight of the machine.

NOTE: Refer to MACHINE JACKING in the MAINTENANCE section of Operators Manual for additional information pertaining to safely jacking up the machine.

INSTALLATION:

1. Remove the rear wheel from the machine. Set the wheel, dust cap, slotted hex nut, cotter pin, and flat washer aside. (Fig. 2)

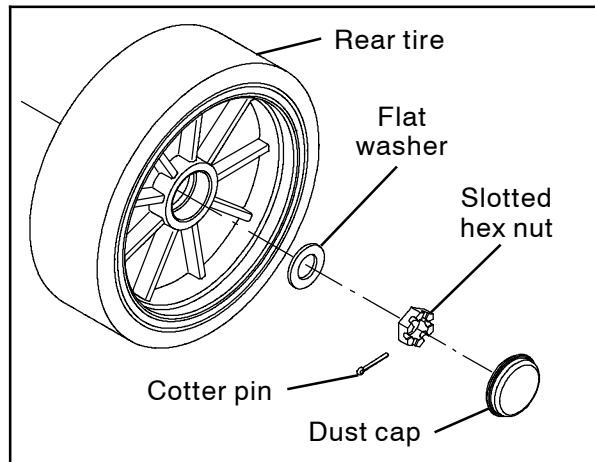


FIG. 2

2. Disconnect the brake rod from the brake shaft and brake drum assembly. Discard the brake shaft and all hardware used to secure the brake shaft to the brake rod and brake drum assembly. (Fig. 4)
3. Use a clevis pin (8) and a cotter pin (4) to connect the end of the brake rod assembly to the brake shaft. (Fig. 4)
4. Use a clevis pin (2) and a cotter pin (4) to connect the end of the brake rod assembly to the brake drum assembly. (Fig. 4)

NOTE: Head of clevis pin (2) ***MUST*** be oriented to the ***OUTSIDE*** of the machine as shown in Fig. 3.

5. Reinstall the rear wheel onto the machine.

6. Rotate the wheel by hand and twist the hex rod (6) until the wheel stops turning. (Fig. 4)
7. Use a marker to mark a straight line from the hex rod (6) up to the adjustable clevis (7). (Fig. 3 / Fig. 4)

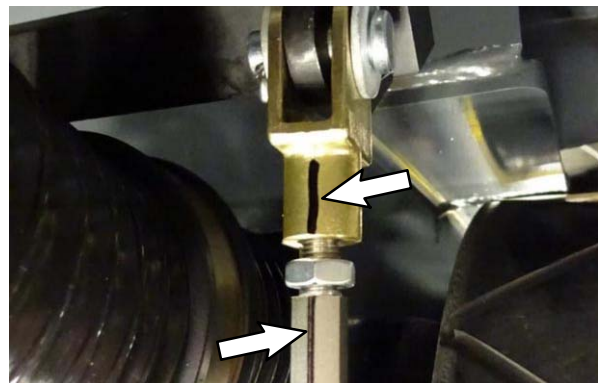


FIG. 3

8. Loosen the hex rod (6) five flat sections to loosen the brake resistance. (Fig. 3 / Fig. 4)
9. Rotate the wheel. There should still be slight brake resistance.
10. Tighten the jam nut (5) against the rod (6). (Fig. 3 / Fig. 4)
11. Raise the machine off the jack stand, remove the jack stand from under the machine, and lower the machine to the floor.
12. Start and test the machine. Drive the machine and check the brakes to ensure they function.

NOTE: Although components are only shown installed on one side of machine, Fig. 4 can be used to install this kit on either side of machine since all parts and components are the same on both sides.

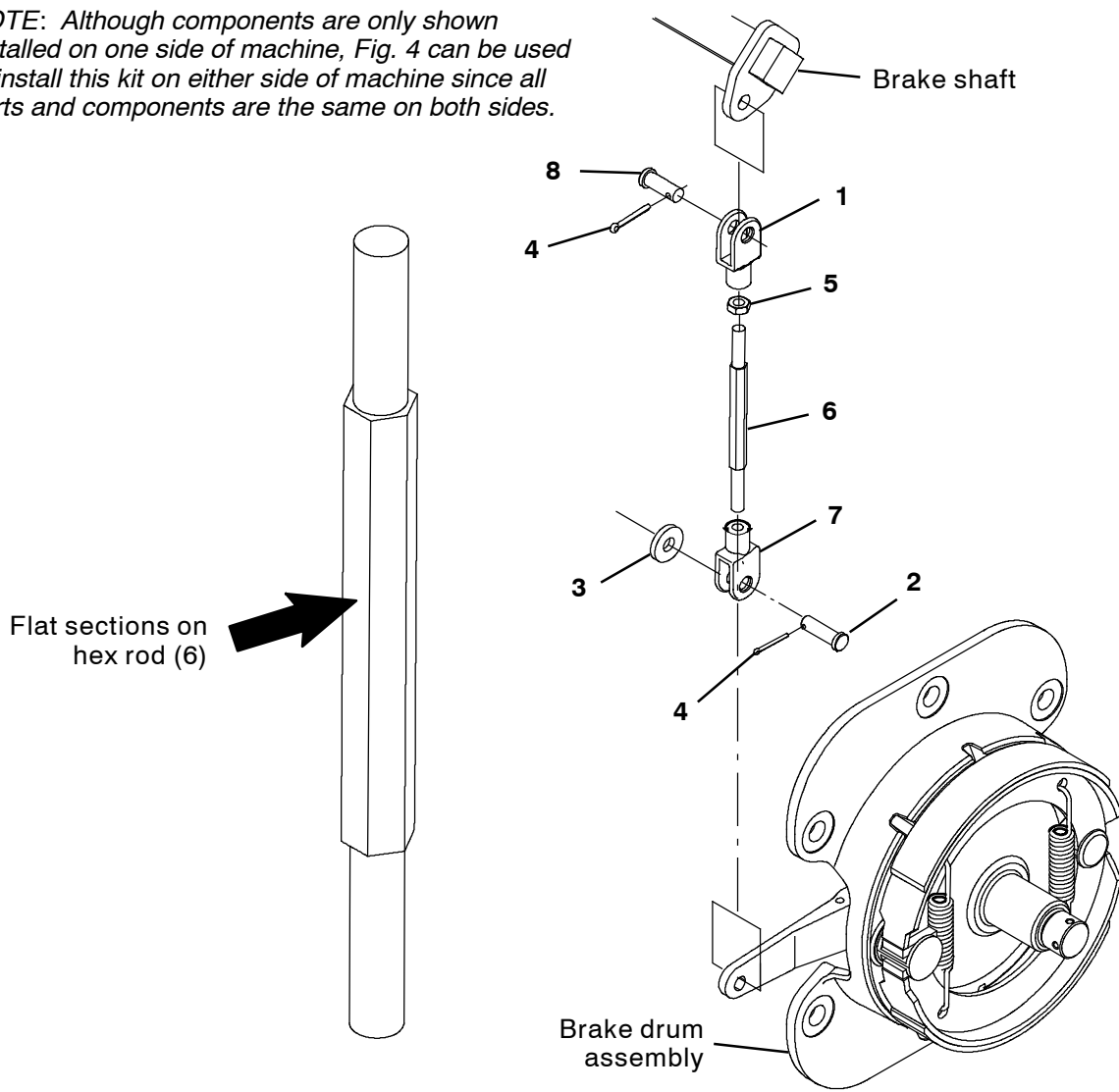


FIG. 4

Bill Of Materials For Brake Rod Kit, Afmkt [T17] - 9020231

Ref.	Tennant Part No.	Description	Qty.
1	1023676	Clevis, Adj, 0.38Pin, 0.31- 24, PL	1
2	630258	Pin, Clevis, 0.38D X 1.00L	1
3	32491	Washer, Flat, 0.31, Std	1
4	08182	Pin, Cotter, .125 X 1.00	2
5	20170	Nut, Hex, Jam, .31- 24	1
6	1207984	Rod, Hex, Thd .31- 24, 2- Ended	1
7	1023677	Clevis, Adj, 0.38Pin, 0.31- 24, LH, PL	1
8	76653	Pin, Clevis, 0.37D X 1.00L	1

TENNANT COMPANY
P. O. Box 1452
Minneapolis, MN 55440-1452